

Enhancement the Microstructure and Mechanical Properties for Pb-Sn-Sb Alloys by Using Equal Channel Angular Extrusion

Adnan Namaa Abood
Welding Eng. Dep.
Middle Technical University
adnan_namaa_59@yahoo.com

Kadhum Ahmed Abd
Mechanical Eng. Dep.
University of Anbar
kadhum1968@yahoo.com

Ammar Nidhal Mousa
Mechanical Eng. Dep.
University of Anbar
eng.ammarnidhalmousa@outlook.com

Abstract

This study aims to enhance the compression strength in one type of Pb-Sn-Sb alloys which wellknown by (Babbitt-ASTM B23 Alloy 13). The processing doing via equal channel angular extrusion technique. Three casting were implemented to manufacture the alloy; Chill Casting (CC), New Rheocasting (NRC) and Gravity Die Casting (GDC). The microscope examination shows that the microstructures contain two phases, α -Pb and cubic shaped intermetallic compound (β -SbSn) in a matrix of ternary phases. CC was fine equiaxed as well as NRC, while in GDC was a dendrite α -Pb phase with remaining β -SbSn phase as a cubic shape. Higher mechanical properties in compression were recorded for Gravity die casting (12.7 %) while the NRC registered the highest value in yield strength (11.7 %). On the other hand, the casting techniques had a slight difference in Young's modulus. The other resulted data like hardness showed that NRC is the first reading (12.55 %) and then gravity casting recorded as second score comparing with other (11.79 %), The results showed aslo that increasing forming temperature during angular extrusion has an adverse effect on compression strength. The study concluded that microstructural change caused by ECAP softens the material due to the break-up the original precipitate and accelerate from the dynamic recrystallization.

Keywords: Babbitt, ASTM B23, Lead alloys, Equal Channel Angular Extrusion

1- Introduction

Equal Channel Angular Extrusion considered as one of newly distinguished forming techniques used for producing ultra-fine grain materials. Obtaining fine grain means improving mechanical and physical properties that destine them for a commercial use [1],[2]. Principally, it can be defined as simple shear deformation achieved by pressing the workpiece through a die containing two channels symmetrical in cross-section and meet at a predetermined angle. The deformation occurs near the plane lying at the intersection of two channels; the processing will do by using particular tool geometries (set of dies

) prevent the free flow of material and thereby produce a significant hydrostatic pressure. The presence of high hydrostatic pressure in combination with large shear strains is essential for creating dislocations. Mainly, high densities of a crystal lattice that can provide a significant refining of the grains; the grain refinement according to the Hall-Petch relationship is considered an effective method to attain both the preferred strength and ductility at ambient temperature [3].

The white metal or babbitt has sizable advantages as a bearing material, and it's suggested as the first choice for most bearing applications. The bearing is usually designed to support the heaviness of the shaft while providing a non-damaging surface for the high rotating shaft, in the event of failure or contamination of over time, the softer Babbitt alloy

consume before the journal or shaft [4]. The Babbitt or bearing materials is a part of term Pb-Sn-Sb series of alloys which involve tin as well as lead-based alloys [5]. Lead-based white metals show a lower friction coefficient, better bonding to the shells, and better properties for casting and extrusion than the tin-based alloys. These results marked it in high status to manufacturing the bearings since its shearing stress of the soft matrix is relatively low [6].

2- Experimental Producer. Material Preparation

The materials used in this experiment was sold from Roto Metals . The ingots of Babbitt (ASTM B23 Alloy 13) produced later by Three casting techniques Gravity Die Casting (GDC) and New Rheocasting (NRC) and Chill casting (CC). Gravity die was made of AISI H13 steel 60x60x120mm with the thickness of 20mm. Two thermocouples K type with 3mm in diameter stainless steel sheath covered were employed. The first thermocouple was used to measure the pouring temperature, and other was fixed in the mould wall through the tip to ensure confident contact between the sensor and the molten metal to determine cooling rate through solidification. The molten metal, in this case, was poured at a temperature of 370°C then left to

solidify at room temperature [7]. New Rheocasting were produced in mold made of AISI 304 austenitic stainless steel of 60x60x120mm. The die was inclined at an angle of 75° for the purposes increasing the contact area among melted and die walls and to give a good circumstance for crystals to creating on the wall and increase the distance of metal stream which helps in increasing the chance of extrication the freezing crystals from the die wall [8]. The molten metal poured at temperature of 265°C on the wall of the inclined mould. When the temperature got approximately 230°C (this temperature at liquid-solid interface) the mould was water cooled (quenched). which promotes the formation of casts with a dense, fine-grained structure and, therefore, good air tightness and superior physicochemical properties [9]. The Chill casting techniques used Water-Cooling (WC) for Oxygen Free High Conductivity (OFHC) copper (99.95%Cu) [10], the thickness of the mould walls was 20mm evenly from each direction , contain groves open head for proupe of flow. the produced billet (65 mm length * 15 mm²). In the water-cooling technology, the molten metal was poured into direct water-cooled mould at temperature 370 °C then left to solidify to room temperature.

Hardnes Readings

The microhardness test was carried out using Vickers hardness tester. The test load and dwelling time were 100g and 10 Sec. respectively according to ASTM-E384. Microhardness measurement selected at four positions from the outer to inner . Brinell Hardness was implemented According to ASTM-E10, the test is preformed with a ball of 2.5mm in diameter and load of 6.25kgf, Three impressions were made then middling for eadings was register, the test caring at room temperature (20-30C°).

Microstructure Characterization

Samples from as castings and extruded billet cutting in vertically section (Figure 1). Four regions were chosen to be investigated, at 1, 2, 3, and 4mm in a direction from outer edge to inner center.each position has a distance 2.5 mm in X and Y plans from a previos point edge .

Billet Perparation

The leading end of the billet was ground into a hemispherical shape using coarse grinding on a grinding table with water as a lubricant. This grinding method was chosen in order to prevent heating by the friction of the specimen. This hemispherical shape was necessary to reduce stress concentrations as the billet entered the bend in the ECAE die. The entire billet was polished with 1200 grit SiC paper and then cleaned with a non-abrasive soap and lubricated by MoS₂ before being subjected to deformation in the ECAE die. It was necessary to reshape and re-polish the

billets after each pass because of the spring-back associated with the processing, which makes the processed billet diameter to be slightly larger than the original one. This reshaping and polishing of the billet were also done using water to eliminate the chance of friction heating of the specimen.

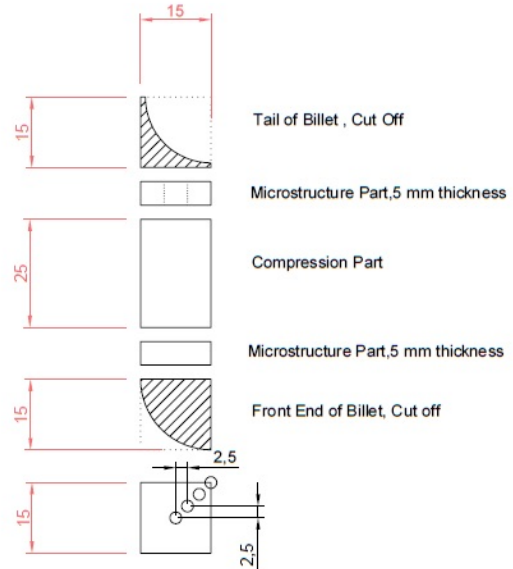


Figure 1; Positions for Microstructure for Extruded billet (all Dimension in mm)

Equal Channel Angular Extrusion:

Figures (2) shows the set of dies that used in extruain. The extrusion process was performed using a hydraulic press (maximum force: 120 KN, maximum stroke: 150 mm). One “K” type thermocouples were inserted to monitor the temperature evolution of extrusion dies. It prepositioned into the die at 5 mm to insure it nearest as much as possible from the internal edge of channel. The heating system consisted in 4 Industrial pin heater at 650-watt power to ensure a uniform temperature in along the channel path. The temperature was measured using a specially calibrated chrome-alumel (K-type) thermocouple connected to a portable thermometer.

Production Operation

In this study, the preformed samples were reheated from room temperature to temperatures 100°C in an external electrical resisting furnace for 15 minutes to reach the targeting processing temperature of extrusion and to allow the temperature in the sample to became fully homogeneous. The punches were made 14.5 mm square cross section area with constant contact ratio of value 0.428, the purpose from above dimensions is to give some clearance. The punches were also made in it front fillet with radius 8mm to avoid any contact with the curvature of the channel in the walls of dies. The channels bend remained a constant 15 mm,

the parts of the die held together by six 1/2" steel bolts. The ECAE process involves pressing a lubricated billet into six different dies vary between 75°, 90° I/II (die 90 II Inner Corner Radius Ri equal to Zero mm while in 90° I the inner corner 5 mm), 105°, 120°, 135°. Several variables influence ECAE process, the primary ones being in this experiment was: feed rate, applied load, and temperature. In this research, the feed rate was fixed at 0.1 mm/sec. The applied load was varied as necessary by the hydraulic press to maintain the constant feed rate. Extrusion took place at constant temperature 100°C, the billet and die lubricated with graphite coating "high-temperature anti-seize compound MoS₂ " to facilitate the extrusion and to lower as much as possible of friction during processing. The push-rod was also lubricated with MoS₂ compound and positioned in the die above the sample. The die halves were then fitted together and bolted into position. The rod was driven through its stroke by a hydraulic pressing machine. The Flash and galling still occurred sometimes in a limited amount, but were both easily removed by cleaning and re-polishing . The billet was oriented in the die following the Bc route (This means that the billet was rotated in the same direction 90° between each pass), the selection for this route because this route has been shown to provide the most homogenous shearing of the microstructure.

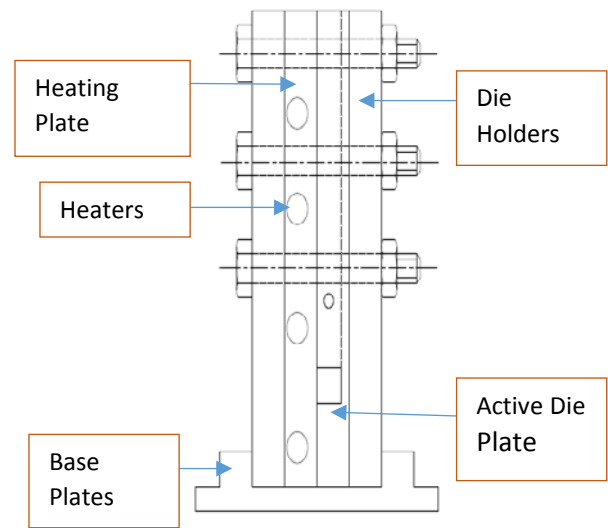


Figure 3: Front View for Assembly of Extrusion Die

Processing up to 4-pass was attempted with each sample. Then specimens were water-quenched immediately after each finish the cycle of pressing, thus eliminating any chance of recovery at such elevated processing temperature.

3- Results and Discussion

In general, without additives of any element. the microstructure of lead-based Babbitt alloy 13 consists of two phases. The white is a phase of β -SbSn which like cubic shape in a ternary eutectic soft matrix formed from the dark phase α -Pb, white β -SbSn and Sb-rich solid solution which was also white. The microstructure obtained from chill cast was fine equiaxed grain for α -Pb phase rather than dendritic structure. The finest microstructure obtained in permanent mold cooling by water is due to the higher cooling rate for molten metal which was undergoing through casting. The average grain size near the walls rather than in the center of specimen is not much-appreciated difference , The average grain sizes of α -Pb are recognized around 14 μ m; Furthermore, the average cubic β -SbSn grain size was approximately 23 μ m to 38 μ m. While the microstructure in Gravity Die Casting showing different DAS sizes in the microstructure that obtained from this technique, The measurement of average DAS indicates that there is difference from the wall to center. from the wall, where they are 16, 25, 28 and 37 μ m respectively. This increasing toward the center is due to the decrease in cooling rate with increasing the distance from the wall, The microstructure examination in NewRheoCasting showed fine cluster equiaxed grain from α -Pb phase rather than a dendritic structure with different grain

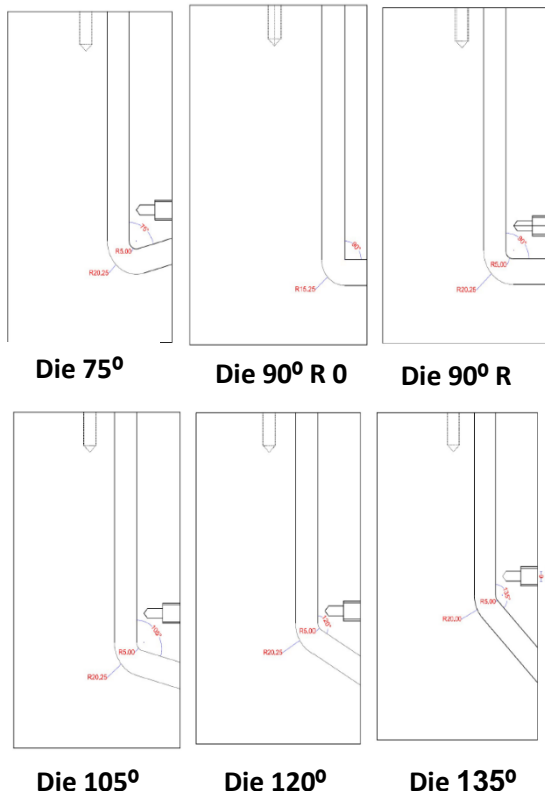


Figure 2: Set of Dies used in Extrusion

size. The average grain size at 2mm from the wall is roughly 13µm due to the high thermal gradient in cooling by water. Moreover, a low size fraction of β-SbSn with average size equal 12µm was detected in fine eutectic. When it moved toward 7mm from the wall were recognized 19µm and 14µm grain size of α and β. The Average grain size sizes of α and β became between 21µm and 16µm respectively with the eutectic coarseness increases at distance of 15mm from the wall was shown. Table (1) shows the mechanical properties of alloy 13 produced by four casting techniques. The figures token at deformation 25 % reduction from the total length of test specimens (25±1mm). Higher mechanical properties in compression are recorded for Gravity die casting (12.7 %) while the NRC registered the highest value in yield strength (11.7 %), on the other hand, the casting techniques have a slight difference in Young's modulus. The other resulted data like hardness showing that NRC is the first reading (12.55 %) and then gravity casting recorded as second score comparing with other (11.79 %), while registered s received as cast the minimum one. Between GDC and NRC curves located chilling curve but with not appreciated difference on NRC. Young moduls which the relationship between stress (force per unit area) and strain token under above constrains (within proportional deformation). It is so clear from the statistics that the technique of equal channel could successfully to refine the grain of β-phase to average 3.24µm,7.91µm near the walls and centers respectively, this significant of refinement is due to hardness ship of these grains rather than other phases. It is good to know here that this phase has grain size before the processing reach to 23.84µm in average. Also, it could notice that angle 105°

give up the most equilibrium distribution for this phase above the cross-section of specimens, this may be justifying to us why that this angle has the highest value in compression strength if we compare with others angles. In the same time, it could notify that grains near the walls are always smaller than the then center, this is because of undergoing higher cooling rate when the processing is finish. However, the differentiation in the sizes is not exceeded 4.67µm which is normally considered if we take into our consideration the size and the shape of the billet. Related to phase α-Pb, which is varying its shape between fine equiaxed and clustering in the course and fine dendritic shape. The common characteristic that distinguishes this phase in all conditions that the grains of lead have the ability to growing up to different sizes depend on its distance from the walls, and it seems there no significant effect for the equal channel on refining its structure. This is due to low recrystallization temperature of Pb which consider within room temperature. This gives us clear answer why we got down in results of compression strength. In general, the possibility of elongate Pb grain with increase the temperature within the direction of extrusion seems to be effected negatively on the results. We conclude from the above, It successes in manage the defragment the beta phase, but at the same time we could not control on growth the alpha phase, so we now have two structures but un-equilibrium in grain sizes and entirely different comparing with it essential cases, Also, it concludes that the boundaries of using a die of 105° with route Bc and slow strain give us the best results because its ability to produce most equilibrated and smallest grain sizes possible among others dies.

Table (1); Mechanical properties of ASTM B23/13 At room temperature

Materials	Properties	σ _c MPa	σ _y MPa	HB Kgf/mm2	E GPa
As Received (Ingot)		84	59	16	30(±2.95)
GDC		107	63	19	30(±1.8)
NRC		94	69	20	30(±0.1)
CC		98	61	17	30(±0.2)

Vickers Micro Hardness Distribution for Chill Specimens

Vickers Microhardness measurement (MHV) at four positions was recorded from the outer edge to center for chill casting samples. From the figures (4) It conclude, That the Vickers Micro hardness registered higher readings nears the walls more than the center in all cases except the die of 75° which register limited reverse values, the reasons behind this fact due to refining the grains nears walls and the coursing

towered the centers, while in the last case is due to long path of inner curve which mean more of heat exchange between the billet and the mould. The heat has negative effect and cause to coursing and dendrite the particle of α-Pb and then not homogenies the microstructure. This is connected by why the billets that extruded by this specific die have the lowest value among other set of dies. however, the differentiations between the readings in same group not exceed 4 HV0.1 which consider reasonable in Vickers Hardness

scale, it concludes from the hardness study that the equal channel have a great impact on homogenies the hardness along cross section of extruded billet, this is the main advantage of this technique rather than refining the grains.

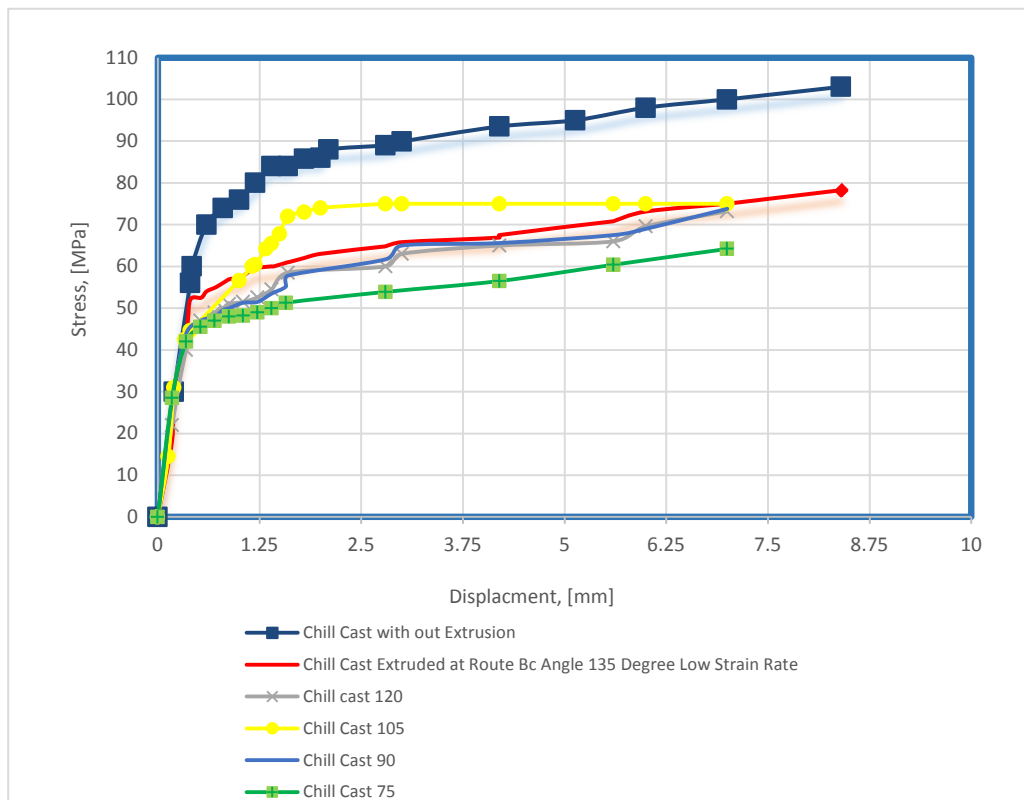
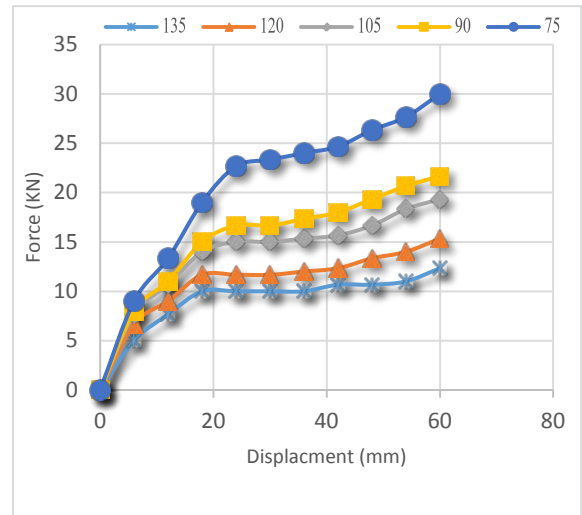
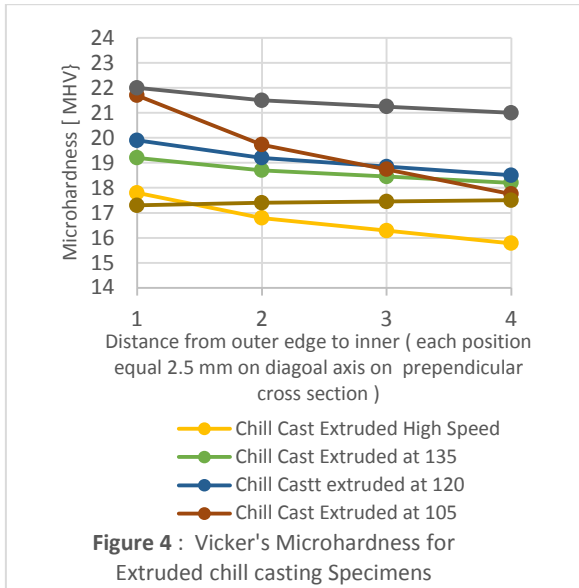


Figure 6: Universal Compression Flow Curves for Five Different Extrusion Angles for Chill Specimens

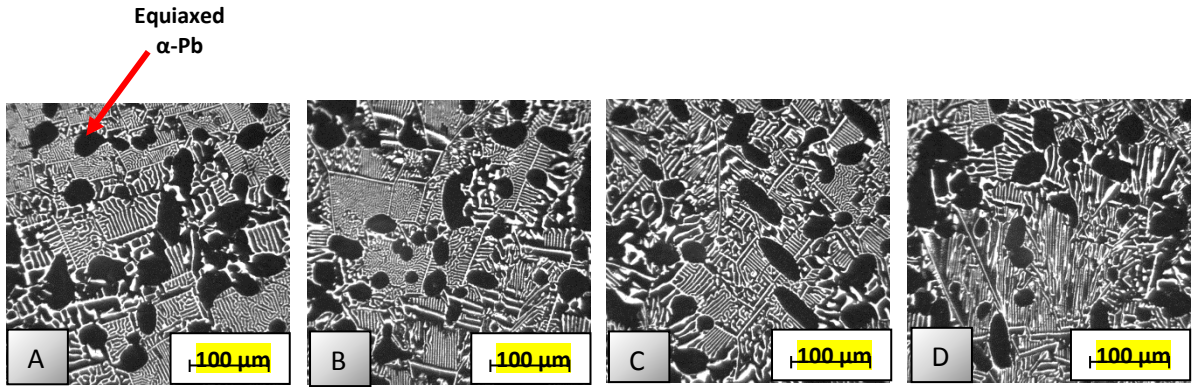


Figure 7: As Received (Ingot) Microstructure

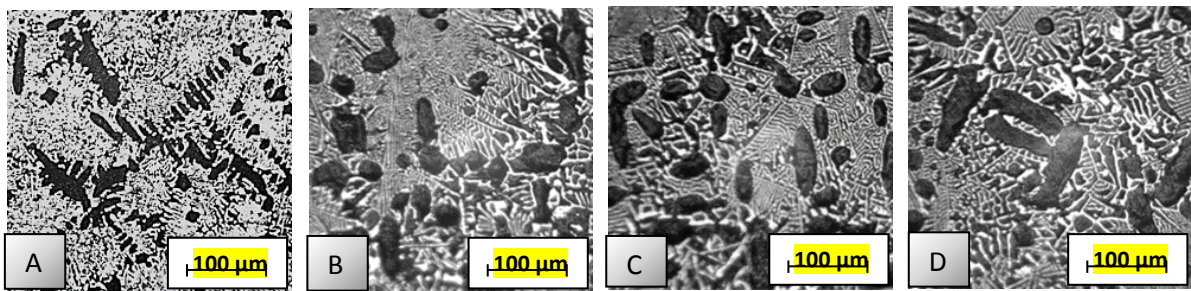


Figure 8 : Gravity Die Cast Microstructure

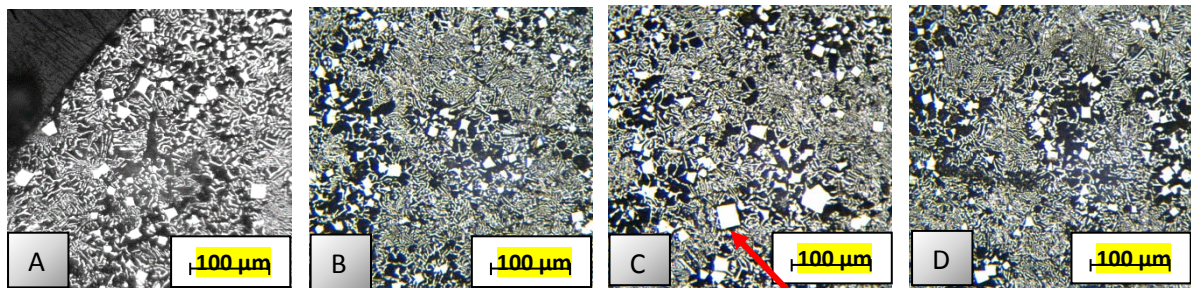


Figure 9 : Chill cast Microstructure

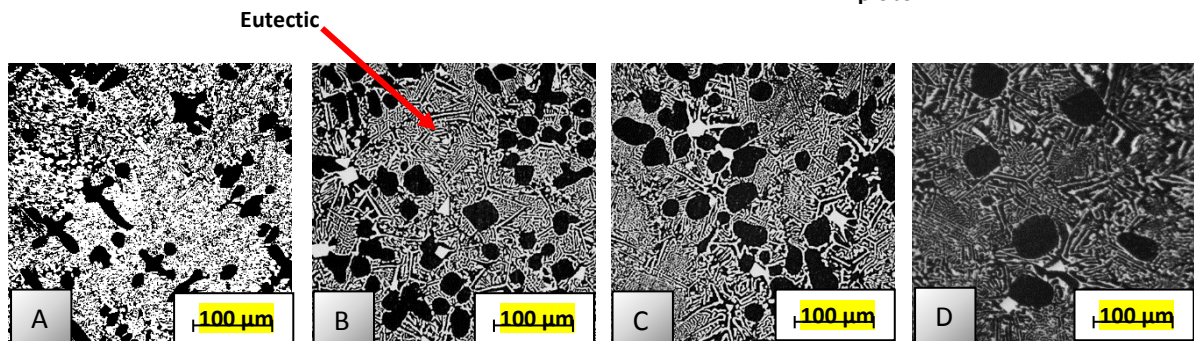


Figure 10: NewRheo Cast Microstructure

Evolution of the Force Required for Equal Channel Extrusion for chill

The results show that the force required for Equal Channel Extrusion Increase with

decreasing the angle of extrusion for all extruded samples. It is clear that the maximum force is 29KN for chill Casting, at temperature 100°C, respectively at room temperature the forces.

Effect of Extrusion Angle on Compression Strength for Chill Casting Specimens.

To compare between compression properties of ARAC, GDC, NRC and CC as castings and the extruded samples, compression tests were performed at room temperature. The primary α -Pb and β -SbSn phases in all cases are small at the surface and gradually increase toward to the center region of the part. In the center, we can clearly see the grain size is bigger and thicker. It is also observed that at the surface, the primary α -Pb is elongated in the direction of extrusion and the β -SbSn phase is fragmented to small parts. It obviously is seen that the particles near the wall underwent severe plastic deformation in all cases, but the fine grains indicate that recrystallization has occurred. These microstructure changes during the equal channel extrusion process are closely related to the angle of extrusion, the temperature of processing and strain rate. The extruded microstructures of conventional gravity die cast, the new cast and chill casting show that phases have semi different distribution. However, modulate for at least three specimens were tested in each condition to provide a fitting curve. Stress-

Displacement curves were re-drawing for compression test for chilled extruded specimens in five angles $135^\circ, 120^\circ, 105^\circ, 90^\circ, 75^\circ$. While it selected soft angle for others casting because strain hardening that accompanies to extrusion and it causes by cracking in early stages. All experiments for compression strength and hardness did at room temperature ($20-30^\circ C$). Also, the study explained hardness ship of production by die 90 II (Inner Corner Radius Ri equal to Zero mm) as it produces elliptical billets that could not easy to re-preparing for next pass. The Variation between two angles could justify by that the metal flow in the second case was higher in the inner curve more than the outer curve that gives us this unique shape, it conclude there is must be found a proportional movement aspects between the inner and outer radius must be taken in our consideration of design.

The Effect of Extrusion Angle 135° Route Bc Low Strain Rate on Microstructure and Compression Strength for New Rheocasting

The microstructure examination showing that within the direction of extrusion on walls of billet surface that the microstructure was elongated α -phase structures with average grain size of $24.28\mu m$, while the β -phase was not clearly visible because of its refining to a low volume fraction of average size less than $4.77\mu m$ was observed in a fine eutectic . Average grain

sizes of α and β -phase increase Moreover within a layer of 2.5 mm deep from the wall surface of the specimen showing that of α and β are 32.33 and $5.1\mu m$, respectively; At a distance of 5 mm deep from the wall in a section perpendicular to the extrusion direction, α -Pb has coarse dendrite; the DAS is $12.88\mu m$. While the microstructure in the center of the specimen in showing that α -Pb have a dendritic with DAS $14.6 \mu m$ whereas β -SbSn phase still appears in both locations as shapes of flakes instead its cubic shapes. The average grain size for α -pb reach to 35.17 in the center of specimens. The α -Pb remains elongated structure at all planes, directions, and distances that mean the effect of equal channel technique here some kind (low action) with new Rheocast if we are comparing with chill casting, the islands, as well as coarse elongation structures, lead us to negative results in mechanical properties of the alloy. The compression strength registers little lower reading rather than as casting, the amount of compression strength in limits of displacement 6.25 mm was $84.75 MPa$. The hardness is also effected negatively after processed by the equal channel to register $17.3 HB$. While the micro hardness gradient from 21.4 to 20.7 As Justification for the behavior of for the curve at it end stages , we can notice that the tail of the curve is still to raise-up and this because of behavior of this kind of soft metals that compressed; it does not eventually shear but continues to flatten out with increasing loads.

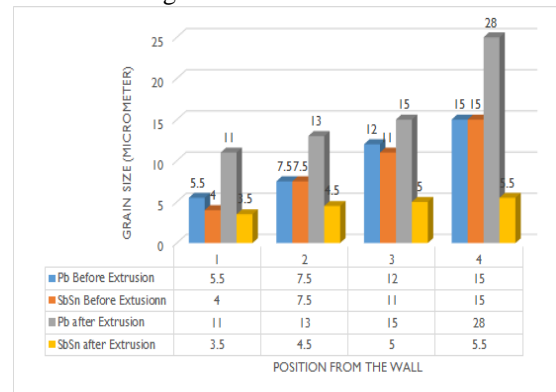


Figure 12: Grain Size for Extruded New Rheocasting Specimens

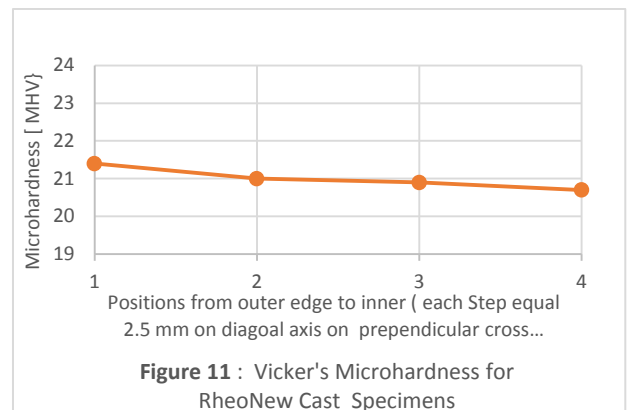


Figure 11 : Vicker's Microhardness for RheoNew Cast Specimens

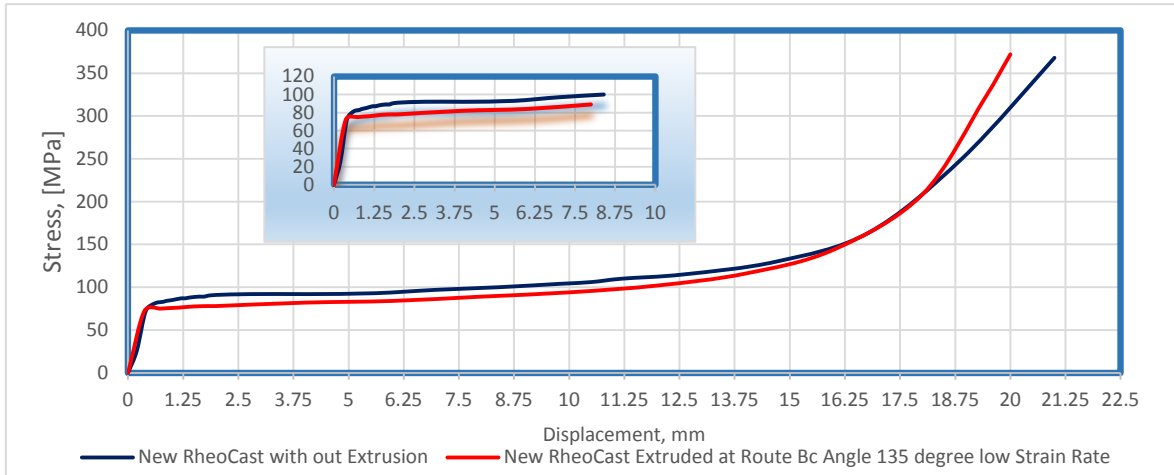


Figure 13: flow chart of compression strength for New Rheo specimen extruded at route Bc angle 135° low strain rate

The Effect of Extrusion Angle 135° / Route Bc on Microstructure and Compression Strength for Gravity Die Cast

Figure (15) shows the change in microstructures with increasing the heating temperature of extrusion up to 100°C for GDC angle 135° and under condition 0.1 strain rate. The grain sizes of α -Pb were elongated up to the twice time approximately to register between grain size between 33-70 μm , while β -SbSn defragment to the shapes of white islands and flacks instead its original cubic shapes. It is good to worth the information here that grain size of GDC without extrusion was about 16-37 of α -Pb and 15-31 μm of β -SbSn phase. The processing temperature plays an important role in the formation of coarsening grain microstructures. In fact, decreasing the deformation temperature results in a finer microstructure. This explains the fact that as the temperature increases, the size of dynamically recrystallized grain increases [6]. The compression strength registers reading 87.1 MPa. While the hardness is effected after processed by the equal channel to register 17.73 HB. While the micro hardness average registered 19.1, 18.15 nears the walls and centers respectively, the behavior at it end stages is similar in all cases , it notice that the tail of the curve is still to raising-up and this because of behavior of this kind of soft metals that compressed; it does not eventually shear but continues to flatten out with increasing load. The metal totally compliant for applied load and the readings represent the resistance of cokes on each others as the layer of metals being very thin .

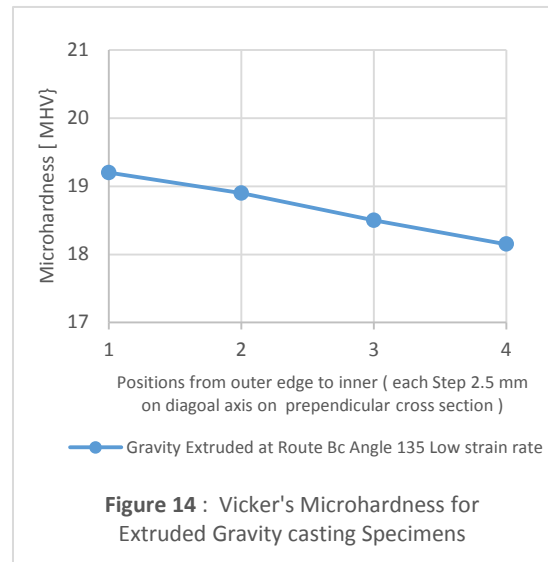


Figure 14 : Vicker's Microhardness for Extruded Gravity casting Specimens

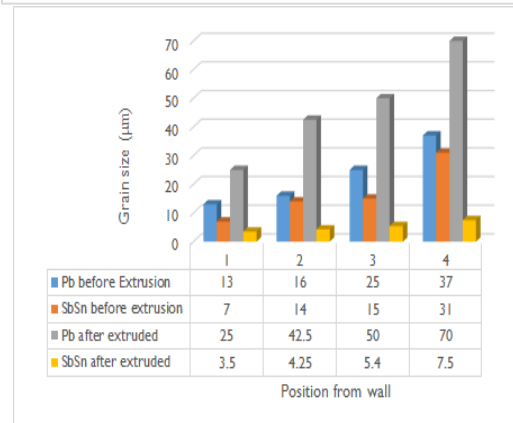


Figure 15: Grain Size for Extruded Gravity Die Castings Specimens

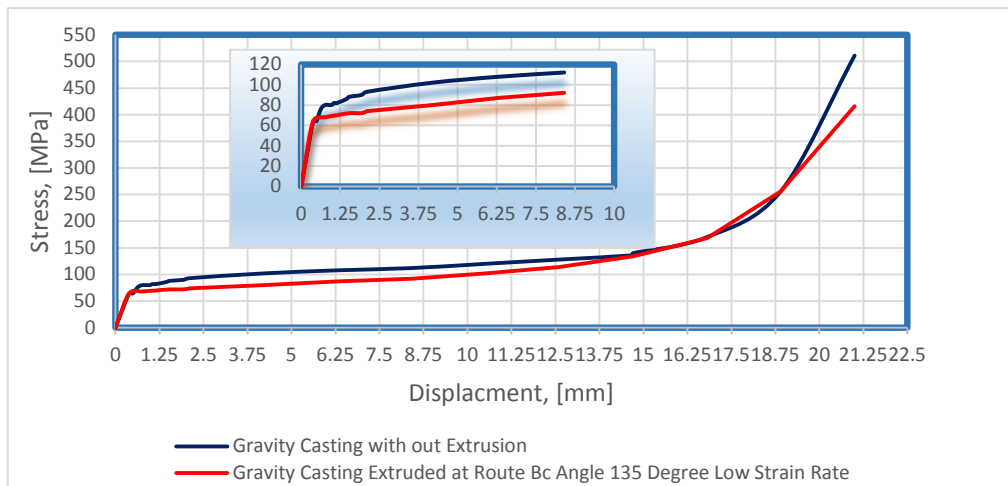


Figure 16: Compression strength for gravity die casting specimen extruded at route Bc angle 135° low strain rate

4- Conclusion

- The study pointed for microstructural change caused by ECAP softens the material due to the break-up the original precipitate and accelerate from the dynamic recrystallization.
- The materials that were processed at elevated temperatures possess a larger grain size than those that were processed at room temperature. Also, the disorientation of the newly formed grain boundaries tends to be lower at elevated temperatures than at room temperature
- Increasing forming temperature during angular extrusion has a negative effect on compression, yield strength and hardness.
- With decreasing extrusion angle, the grain size is refined, and the mechanical properties at room temperature are improved effectively.
- Normally applied load will be increased with decreasing the angle of extrusion angle.
- There is no obvious relation between the relative magnitude of either the ultimate strength or yield point and the both type of hardness (Brinell and Vickers).The hardness of B23-alloy 13 drops off very rapidly with increasing temperature.

5- Reference:

[1].B. Srinivas, Ch. Srinivasu, Banda Mahesh and Md Aqheel , " A Review On Severe Plastic Deformation", Journal of Advanced Materials Manufacturing & Characterization", Vol. 3, pp. 291-296, 2012.

[2].A. Rosochowski , "Processing Metals by Severe Plastic Deformation", Trans Tech Publications, Switzerland, Vol. 101-102, pp. 13-22, 2005.

[3].P. Sriram and Ch. Visweswara, "Recent Developments in Cast Non-Ferrous Bearing Materials," Metal World, vol. 1, no. 1, pp. 6-10, 2006.

[4].American Power Service, "Babbittrepair.Com", 2017; [Http://www.Babbittrepair.com/](http://www.Babbittrepair.com/)

[5].T. Teker and M. Kaplan, "The Effect of Co and Cr Particles Additions On Microstructure and Wear Behavior of Pb-Sn Based Alloy", Journal of Alloys and Compounds, Vol. 484, No. 1, pp. 510-513, 2009.

[6].R. Schouwenaars, J. I. Romero, V. H. Jacobo and A. O, "Microstructures of Rapidly Solidified Pb-Sb-Sn Alloys", Advanced Materials Research, Vol. 15, No. 17, pp. 621-625, 2007.

[7].A. N. Abood and T. S. Habeb, "Production of AZ-27 alloy by New Rheocasting Process," Zankoy Sulaimani, vol. 11, no. 1, pp. 89-99, 2008.

[8].L.Bochao, P.Youngkoo and D. Hongsheng , "Effects of Rheocasting and Heat Treatment On Microstructure and Mechanical Properties of A356 Alloy", Materials Science and Engineering, Vol. 528, No. A, pp. 986-995. 2011

[9].ASM Handbook, "Properties and Selection Non-Ferrous Alloy and Special-Purpose Materials", Vol. Vol.18, 2004.

[10]. J. Sengupta, B. G. Thomas and M. A. Wells, "Understanding the Role water-Cooling Plays During Continuous Casting of Steel and Aluminum Alloys", in MS & T Conference Proceeding , (New Orleans , LA) AIST, Warrendale, PA, 2004.

[11]. R. Koring, "Improved Bearing Alloy a Contribution Toward Enviromental Production," Proceeding of the Thirty Second Tarbomechinary Symposium, pp. 85-89, 2003.

تحسين البنية المجهرية والخواص الميكانيكية لسبائك Pb-Sn-Sb باستخدام عملية البثق الزاوي في القوالب ذات القنوات المتماثلة

عمار نضال موسى
قسم الهندسة الميكانيكية
جامعة الأنبار

كاظم احمد عبد
قسم الهندسة الميكانيكية
جامعة الأنبار

عدنان نعمه عيود
قسم هندسة اللحام
الجامعة التقنية الوسطى

الخلاصة

يهدف البحث إلى دراسة تحسين البنية المجهرية والخواص الميكانيكية (مقاومة الانضغاط) لأحدى سبائك مجموعته Pb-Sn-Sb والذي يعرف بسبيكة البانيت Babbitt ASTM B23 alloy 13 او كما يدعى تجارياً بالمعدن الأبيض لسبائك المحامل ، تتم العملية من خلال عملية البثق الزاوي في القوالب ذات القنوات المتماثلة. استخدمت ثلاثة تقنيات لإنتاج السبيكة وهما السباكة بالقوالب المعدنية (GDC) والسباكة التندفقية (NRC) والسباكة المصقعة (CC) (أظهر الفحص بالمجهر الضوئي بأن البنية المجهرية تحتوي على طورين هما طور رصاص ألفا α -Pb وطور مكعب الشكل من مركب معدني (β -SbSn) في أرضية من إيبوتكتيك المتكون من ثلاث أطوار. رافق السباكة بالقوالب المعدنية تركيب شجري لطور رصاص ألفا، بينما لوحظ أن طور ألفا كان متساوي المحاور عند استخدام السباكة التندفقية والسباكة المصقعة. حققت السبيكة المصنعة بواسطة السباكة بالقوالب المعدنية أفضل خواص ميكانيكية من حيث مقاومة الانضغاط، بينما كانت النتائج المسجلة من الطريقتين الأخرتين نتائج أقل.

كما تم الاستنتاج بان المقاومة تتأثر بشكل كبير بدرجة حرارة البثق، حيث أن المصبوبات التي تم بثقها بدرجة حرارة عالية لها بنية حبيبية خشنة أكبر مما لو تم بثقها بدرجة حرارة الغرفة، وان لدرجة الحرارة العالية تأثير سلبي و تضعف من مقاومة الانضغاط، لذلك يوصى بعدم استخدام درجات الحرارة العالية حتى وان كانت سرعه البثق بطيئه.

كما تم استخلاص الى انه عملية البثق الزاوي تضعف البنية المجهرية بسبب تكسر الأواصر وتزيد من سرعه عملية إعادة التبلور الديناميكي، لذلك يفضل التقليل من زاوية البثق والمحاولة دائما استخدام درجات حرارة الغرفة مما ينتج زيادة نعومة التركيب المجهرى وبالتالي تحسن في الخواص الميكانيكية.